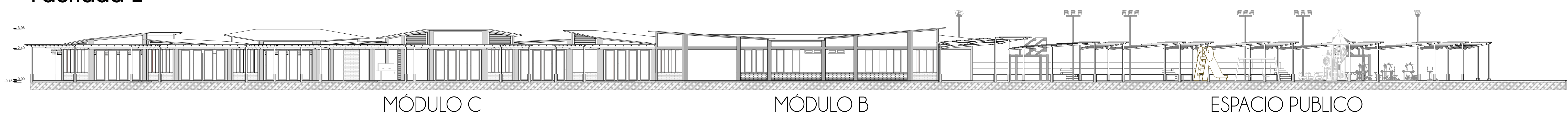


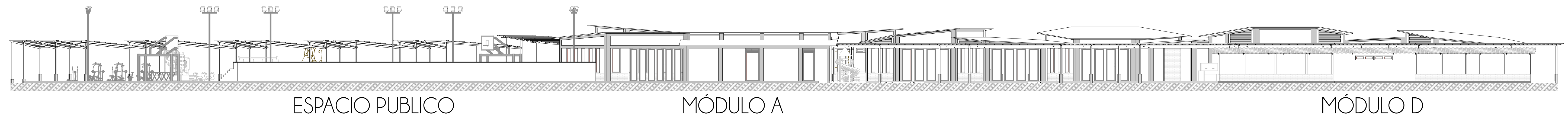


FACHADAS Y CORTE

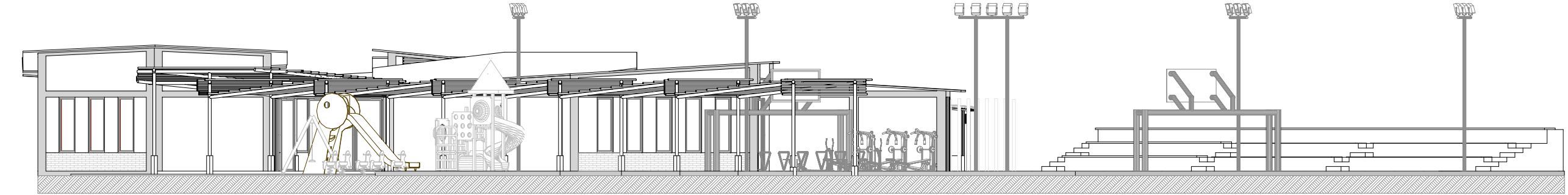
Fachada 1



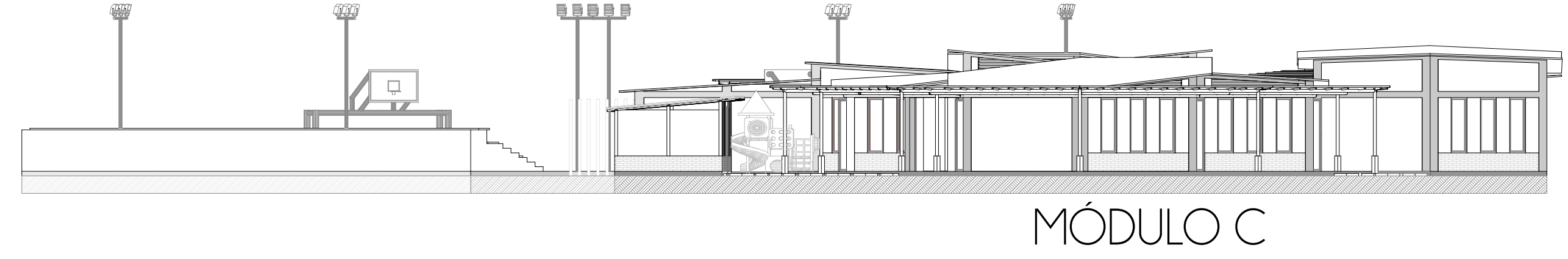
Fachada 2



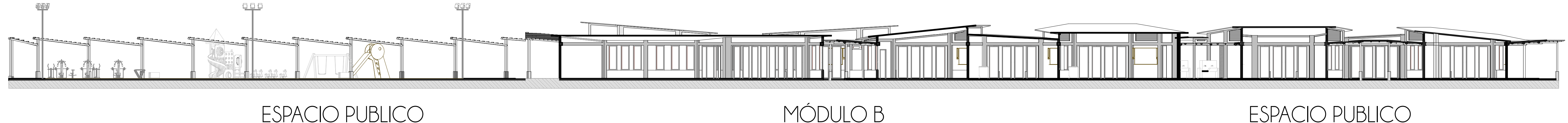
Fachada 3

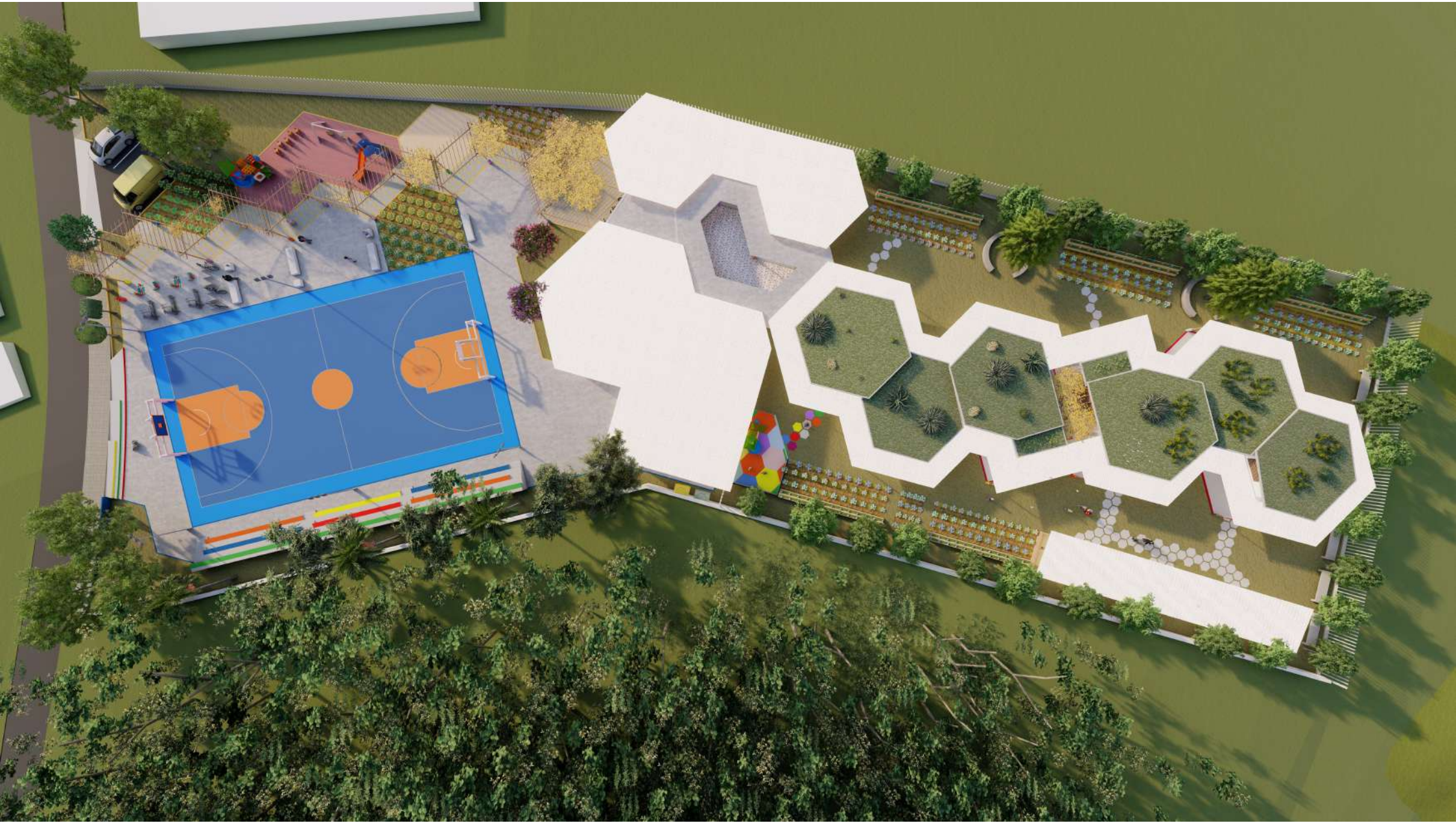


Fachada 4



CORTE A-A































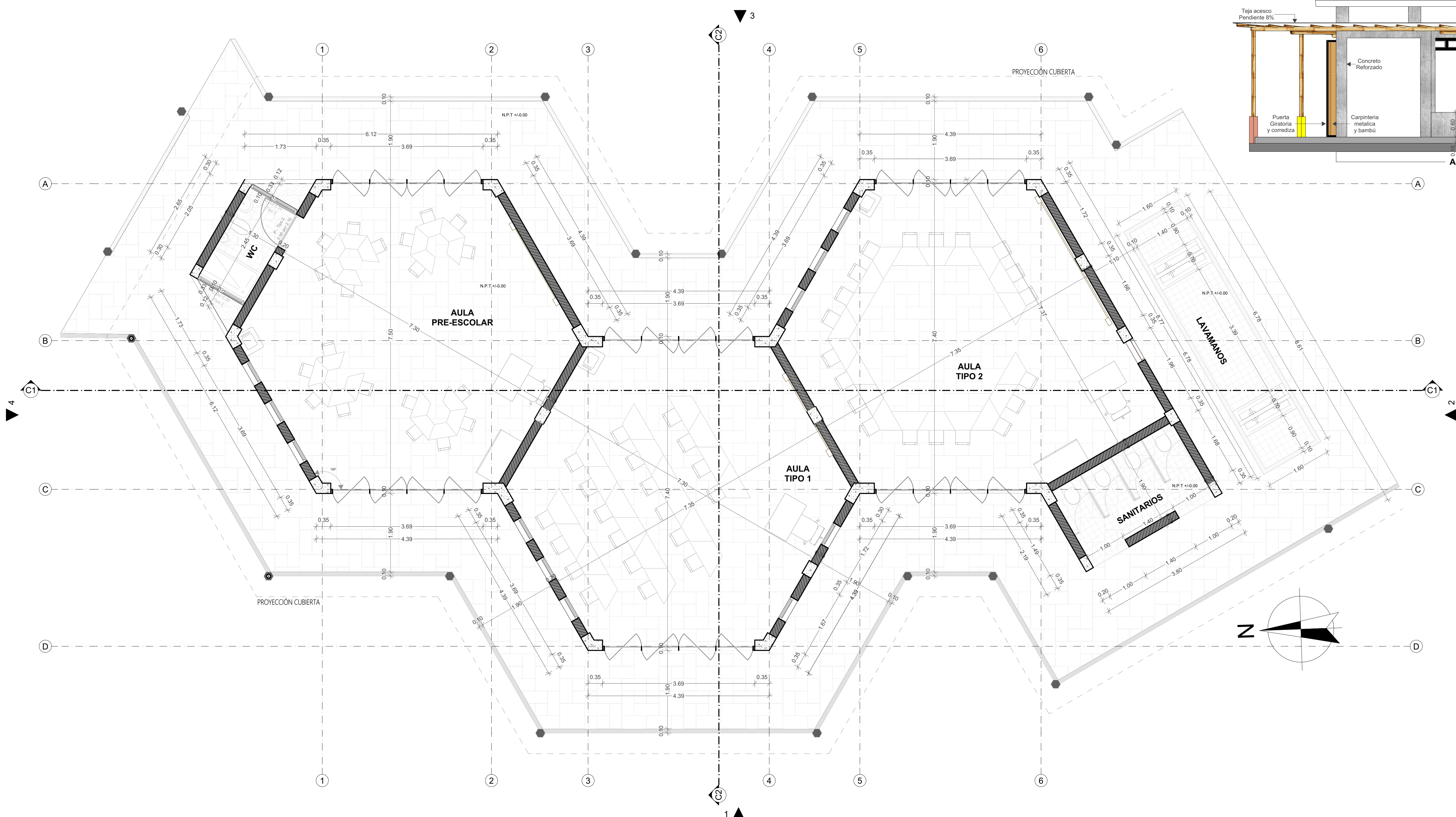




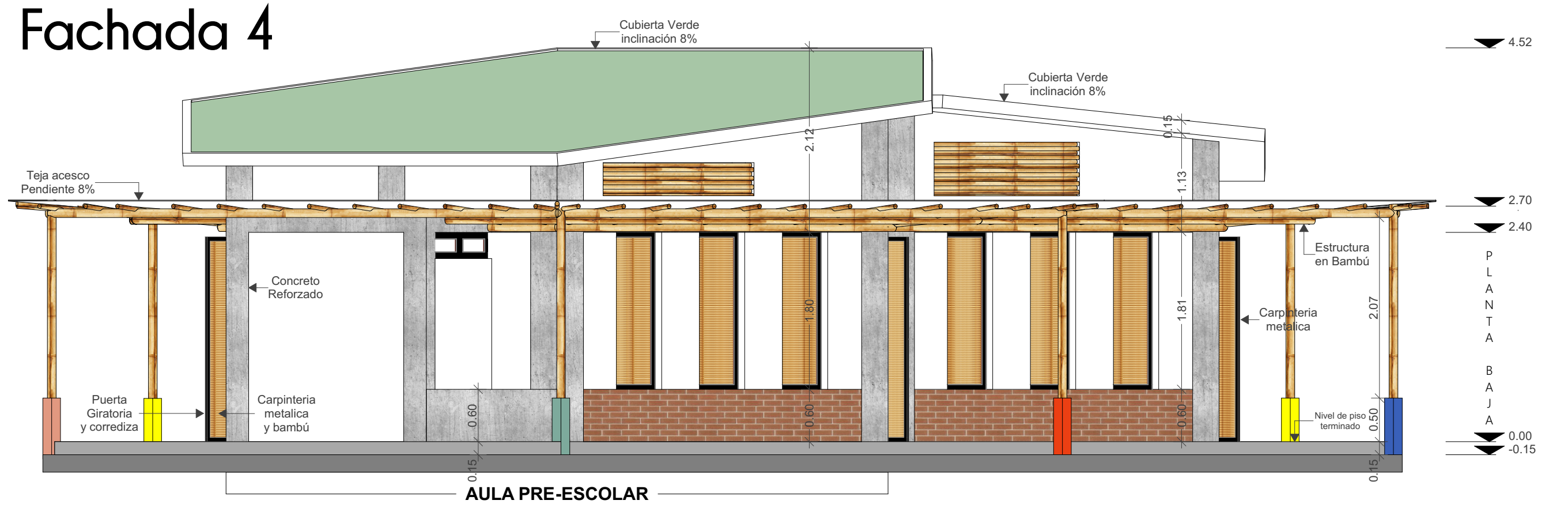


MÓDULO C

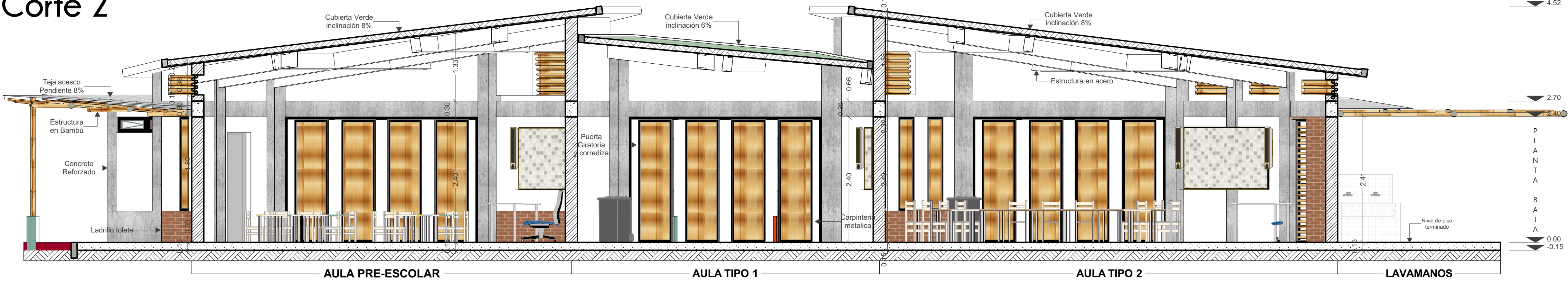
Planta



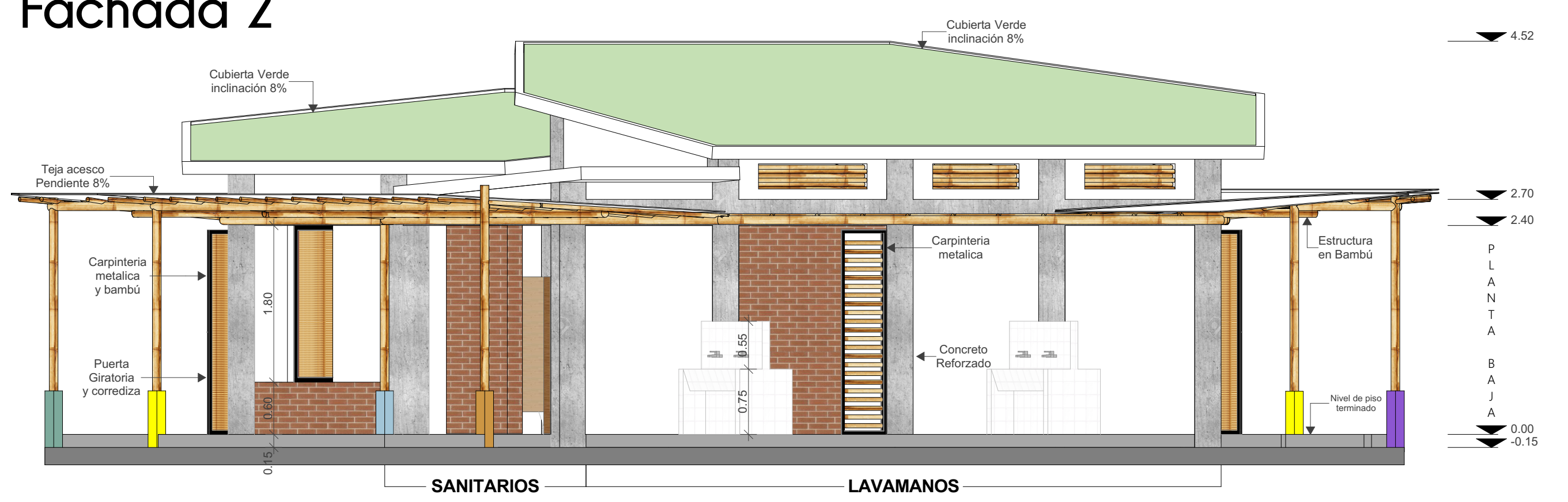
Fachada 4



Corte 2

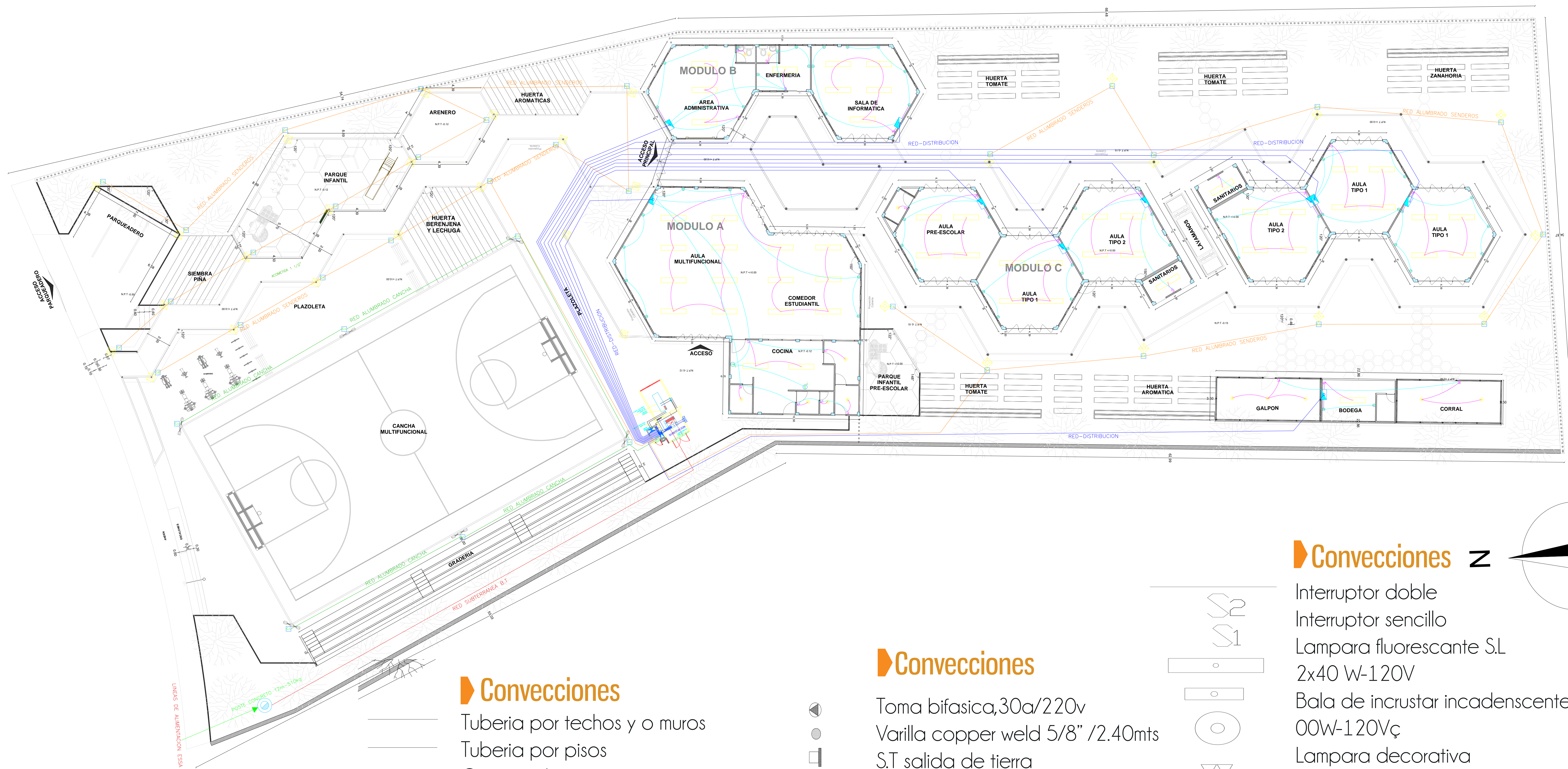


Fachada 2





PLANO RED ELÉCTRICA.



- Convecciones**
- Tuberia por techos y o muros
 - Tuberia por pisos
 - C.I. Camara de inspección
 - Tablero de desitribución
 - Tablero eléctrico de breakers
 - Toma de telefonico
 - Toma monofasica con polo a tierra, 15A/120V

- Convecciones**
- Toma bifasica, 30a/220v
 - Varilla copper weld 5/8" /2.40mts
 - S.T salida de tierra
 - Strip telefono
 - Caja de paso de 20x20x15
 - Lampara incandescente
 - Red subterranea B.T
 - Red de distribución
 - Red alumbrado cancha

- Convecciones**
- Interruptor doble
 - Interruptor sencillo
 - Lampara fluoescante S.L 2x40 W-120V
 - Bala de incrustar incadenscente 1 00W-120Vç
 - Lampara decorativa 2x78w/120V.bombilla reflecto
 - Lampara wall packet sodio 70W/120V
 - Linea de acción interruptor
 - Ventilador
 - Iluminación senderos
 - Toma corriente especial GFCI

